

Human B7-H6/NCR3LG1 Protein

Cat. No. BH7-HM276

Description

Source	Recombinant Human B7-H6/NCR3LG1 Protein is expressed from HEK293 with hFc tag at the C-Terminus. It contains Asp25-Ser262.
Accession	Q68D85-1
Molecular Weight	The protein has a predicted MW of 53.4 kDa. Due to glycosylation, the protein migrates to 70-80 kDa based on Bis-Tris PAGE result.
Endotoxin	Less than 1EU per μg by the LAL method.
Purity	> 95% as determined by Bis-Tris PAGE > 95% as determined by HPLC

Formulation and Storage

Formulation	Lyophilized from 0.22 μm filtered solution in PBS (pH 7.4). Normally 8% trehalose is added as protectant before lyophilization.
Reconstitution	Centrifuge the tube before opening. Reconstituting to a concentration more than 100 $\mu\text{g}/\text{ml}$ is recommended. Dissolve the lyophilized protein in distilled water.
Storage	-20 to -80°C for 12 months as supplied from date of receipt. -80°C for 3 months after reconstitution. Recommend to aliquot the protein into smaller quantities for optimal storage. Please minimize freeze-thaw cycles.

Background

B7-H6 is a glycosylated member of the B7 family of immune costimulatory proteins. which is a ligand for the NK cell activating receptor NKp30, was targeted to create a CAR that targets multiple tumor types. B7H6 is expressed on various primary human tumors, including leukemia, lymphoma and gastrointestinal stromal tumors, but it is not constitutively expressed on normal tissues.

Assay Data

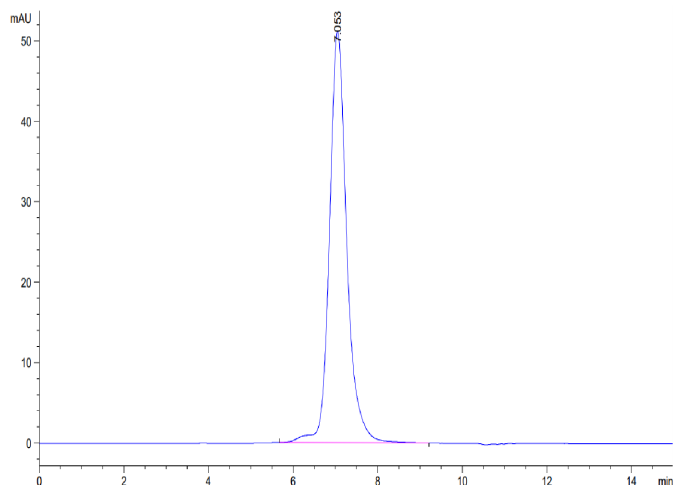
Bis-Tris PAGE



Human B7-H6 on Bis-Tris PAGE under reduced condition. The purity is greater than 95%.

SEC-HPLC

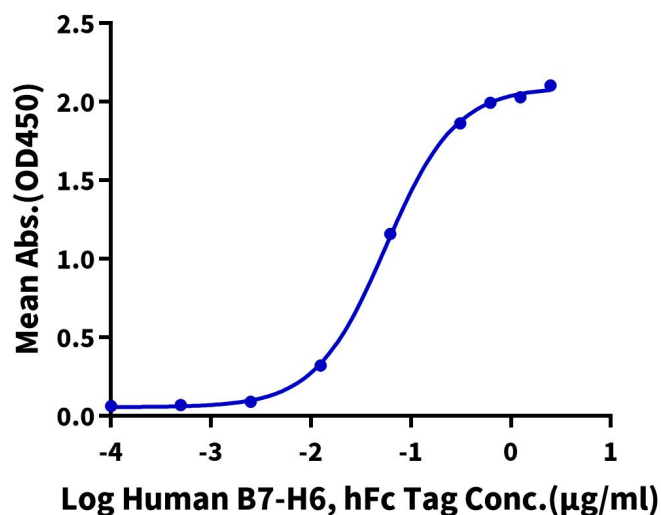
Assay Data



The purity of Human B7-H6 is greater than 95% as determined by SEC-HPLC.

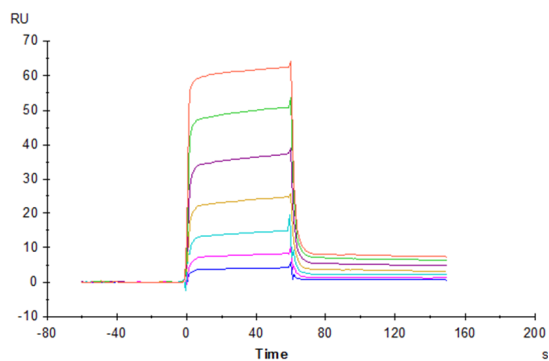
ELISA Data

Human B7-H6, hFc Tag ELISA
0.2µg Human NKp30, His Tag Per Well



Immobilized Human NKp30, His Tag at 2µg/ml (100µl/well) on the plate. Dose response curve for Human B7-H6, hFc Tag with the EC50 of 55.9ng/ml determined by ELISA (QC Test).

SPR Data



Human B7-H6, hFc Tag captured on CM5 Chip via Protein A can bind Human NKp30, His Tag with an affinity constant of 0.292 µM as determined in SPR assay (Biacore T200).